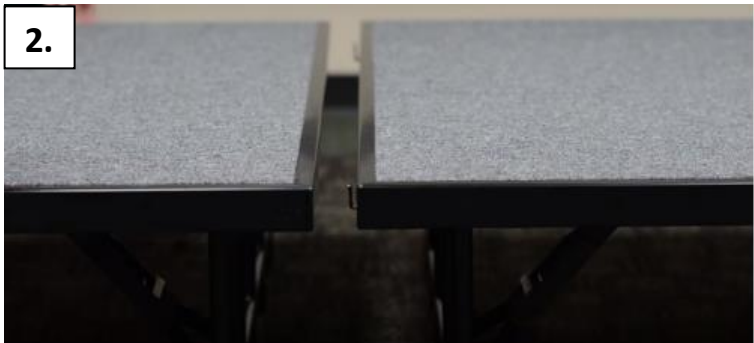
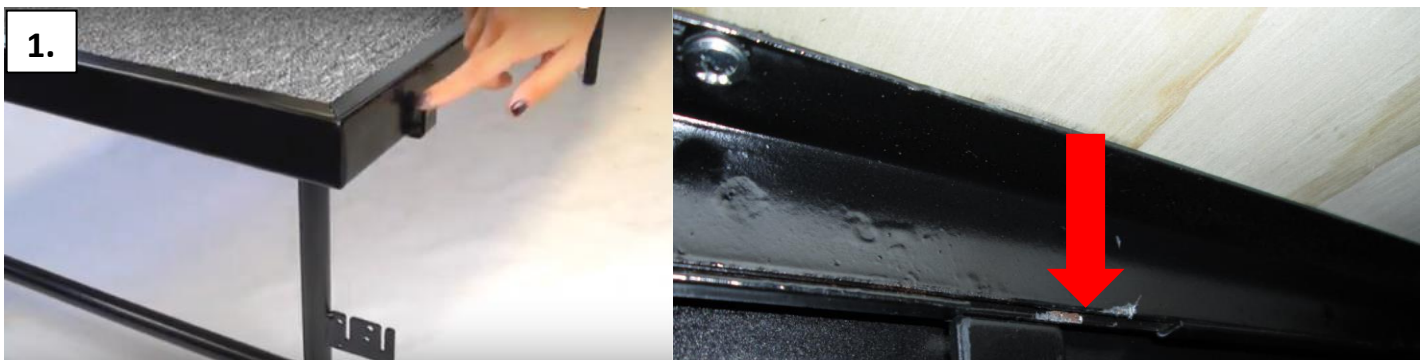


RS & RT Riser series – Ganging Instructions

Same level ganging

1. Locate ganging hooks on one & ganging cutouts on other riser frame underside
2. Align ganging hooks with ganging cutouts
3. Lift riser with ganging cutouts...
4. ... and carefully lower into hooks on other riser
5. Ensure that both risers are level



Dear Customer,

Thank you for your purchase. Although extreme care goes into manufacturing & packaging of this product, mistakes are possible. If you encounter any missing parts or difficulty in assembly, please contact our customer service Toll Free at 1-800-261-4112 or info@nationalpublicseating.com for courteous & immediate assistance and resolution to your problem.

RS & RT Riser series – Ganging Instructions

Multi-level ganging

1. Align ganging devices on legs of both levels
2. Carefully lift frame of lower level...
3. ... and lower into slot on ganging device of upper level
4. Move ganging hook on upper level forward...
5. ...and lock onto top of lower level
6. Insert pin into hole on lower end of ganging hook
7. Ganging hook is now secured not to unhook
8. Lift ganging bracket on leg of upper level...
9. ...turn & lower onto ganging tube on leg of lower level



Dear Customer,

Thank you for your purchase. Although extreme care goes into manufacturing & packaging of this product, mistakes are possible. If you encounter any missing parts or difficulty in assembly, please contact our customer service Toll Free at 1-800-261-4112 or info@nationalpublicseating.com for courteous & immediate assistance and resolution to your problem.